

TESSUTI E COLORI

La qualità tecnica nelle strutture e nei meccanismi ergonomici costituisce l'anima forte ed invisibile dei nostri prodotti. La loro bellezza estetica è invece affidata alla scelta attenta ed innovativa dei materiali e dei colori di rivestimento, dalla pelle ai tessuti più vari. Il nostro campionario nasce specificatamente dall'esigenza di soddisfare il mercato attento al valore dell'immagine, ma anche e soprattutto alla sicurezza dei materiali ed alla loro resistenza all'usura ed al tempo. I tessuti da noi utilizzati, sono, nell'ambito della categoria d'appartenenza, della migliore qualità e prodotti in Italia.



PELLE | CAT.A

Pelle fiore smerigliata finitura Madras bovina naturale biologica morbida ed elegante.
La presenza di piccole imperfezioni, sono la garanzia di aver acquistato un prodotto naturale.



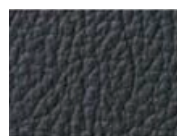
AP03



AP02



AP01



AP04

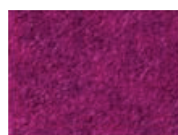
LANA | CAT.B

100% Pura Lana Vergine
Peso: gr./mq. 410

Abrasione: Test Martindale 50.000 cicli
Norma UNI EN ISO 1021



BL134



BL104



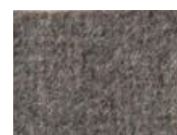
BL105



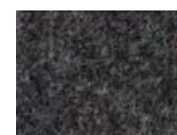
BL106



BL111



BL103



BL112



BL120



BL125

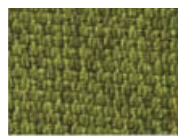
MINI | CAT.C

100% Poliestere
Peso: gr./mq. 340

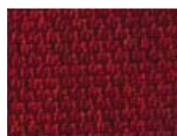
Abrasione: Test Martindale 100.000 cicli
Norma UNI EN ISO 12947-2



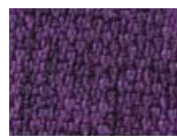
CM3508



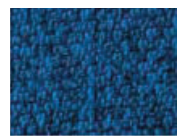
CM7522



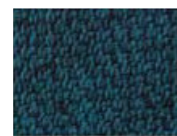
CM4528



CM5596



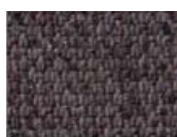
CM6504



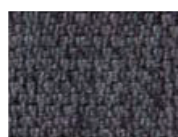
CM7503



CM1506



CM1520



CM8511

TREVI E | CAT.C

100% Poliestere
Peso: gr./mtl. 630

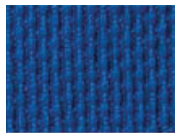
Abrasione: Test Martindale 70.000 cicli
Norma UNI EN ISO 12947-2



CT8128



CT8431



CT8347



CT8239



CT8231



CT8651

LASER N | CAT.D

100% Poliestere
Peso: gr./mtl. 480

Abrasione: Test Martindale 90.000 cicli
Norma UNI EN ISO 12947-2



DL7041



DL9702



DL9277



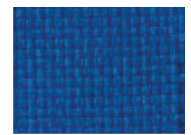
DL9233



DL3094



DL4027



DL6071



DL6080



DL9217

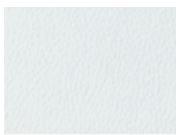


DL8033

AURA | CAT.D

72%PVC 25%CO 3%PU
Peso: gr./mq. 690

Abrasione: Test Martindale 50.000 cicli
Norma UNI EN ISO 5470-2/03



DA01



DA05



DA10



DA20



DA04



DA09



DA11



DA26

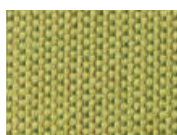


DA24

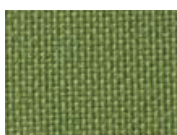
KING L | CAT.E

100% Poliestere
Peso: gr./mtl. 365

Abrasione: Test Martindale 80.000 cicli
Norma UNI EN ISO 12947-2



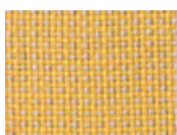
EK9702



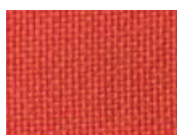
EK7019



EK9244



EK3508



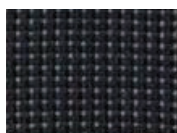
EK3094



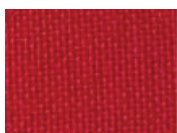
EK5015



EK8033



EK8510



EK4027

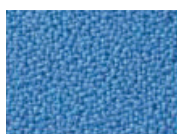


EK6071

MIRAGE | CAT.E

100% Poliestere
Peso: gr./mq. 490

Abrasione: Test Martindale 100.000 cicli
Norma UNI EN ISO 12947-2



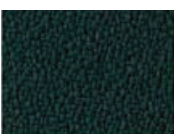
EM380



EM53



EM651



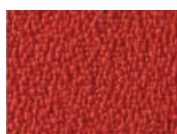
EM496



EM231



EM331



EM120



EM426



EM236

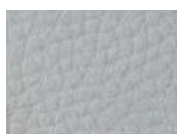


EM629

ATOM | CAT.F

83%PVC 15%PES 2%PU
Peso: gr./m2 450

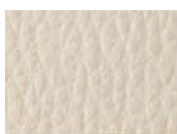
Abrasione: Test Martindale 60.000 cicli
Norma UNI EN ISO 5470-2



FT03



FT05



FT12



FT14



FT16



FT21



FT23



FT24



FT34

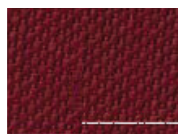
RADIO | CAT.F

100% Poliestere
Peso: gr./mtl. 560

Abrasione: Test Martindale 80.000 cicli
Norma UNI EN ISO 12945-2



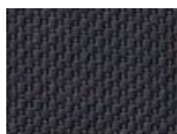
FA8532



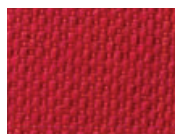
FA4017



FA7008



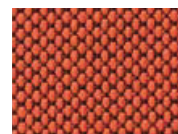
FA8017



FA4028



FA3082



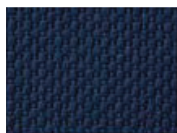
FA3594



FA7508



FA6571



FA6098



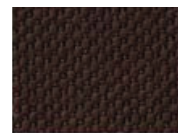
FA6071



FA7025



FA1008



FA2036



FA8033

CANOVA | CAT.G

100% Polipropilene
Peso: gr./mq. 230

Abrasione: Test Martindale 80.000 cicli
Norma UNI EN ISO 12947-2



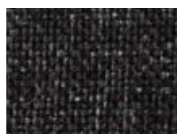
GC11



GC131



GC01



GC24

SILVIA | CAT.G

60%PES 40%CO
Peso: gr./mtl. 550

Abrasione: Test Martindale 100.000 cicli
Norma UNI EN ISO 12947-2



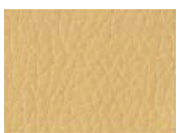
GS58



GS957



GS930



GS30

Per motivi tecnici non è possibile garantire la perfetta corrispondenza dei colori di questo stampato. Sugeriamo quindi di controllare l'apposito campionario colori.

BRACCIOLI

Personalizza la seduta secondo le tue necessità ed i tuoi gusti
abbinandola ad uno dei braccioli proposti



BRKU



BRKIAL



BRKIN



BRDO



BRPL



BR01



BR06



BR07



BR04



BR09



BR03



BR05